

Cleo II

Uniquely versatile and compact

Key features of the range ~

- Folding and extending legrest chair
- Below-the-Patient swing-arm delivery system
- Clean and Preparation position
- Rotating cuspidor
- Mobile options
- Air and Electric versions
- Available with Seamless or Luxury upholstery
- Standard or Ultrasoft upholstery colour options
- Upgradeable Operator's Console functionality

***Advanced** technology, improved ergonomics and the Operator-friendly features of the Cleo II ensure superior control and precision for the dental team. The unique folding and extending chair provides unrivalled comfort and access for both Operator and Patient. The flexibility of the Cleo II range ensures that any configuration will equip a dental surgery with the ultimate, complete surgery system.*

Treatment Centres, Flexible Systems and Operating Light options



Cleo II 'Surgery System'



Cleo II 'Flexible System'



Mobile Cart¹



Module¹



700 Series
720SLR unit-mounted²



800 Series
820S unit-mounted²



900 LED Series
920 LED unit-mounted²

Cleo II Surgery efficiency

Equipped for an array of surgery procedures and working methods in complete comfort.

Cleo II 'Surgery System'

Luxury upholstery (Special order item)

Operator console key features ~

- 4 programmable Operator settings
- Digital display
- First-priority handpiece selection
- Digital timer

'E' version additional features ~

- Preset micro-motor
- Torque control with Auto-Reverse
- 2 fibre-optic Turbine hoses

Height-adjustable, extendable, rotating Assistant's console

Easy-clean porcelain spittoon with cup-filler and bowl-flush



Operator's console rotates smoothly on a base-mounted arm designed for precise and balanced positioning

Control

Removable rubber mat



Control and precision are the prerequisites of the Cleo II. The Operator's console rotates smoothly on a compact, base-mount enabling an Operator easy access between the 9 and 1 o'clock positions. Hygiene-conscious at every point, the Cleo II is designed to perform in the most demanding dental surgery environments.

uniquely ideal flexibility

Mobile configurations to suit any Practice and the flexibility of Electric and Air versions to fulfil individual preferences.



Cleo II 'Flexible System'

Seamless upholstery (Luxury option available)

Rotating cuspidor unit increases access for an Assistant working closely over the Patient from the 3 o'clock position

Cleo II chair key features ~

- Folding and extending legrest with safety feature
- Twin-articulating headrest
- Ultra-slim backrest
- Lumbar support
- Foldaway, detachable armrests
- Integrated foot control stalks
- Foot control
- Available with Luxury or Seamless upholstery
- Chair preset positions



Vacuum solids collector is easily accessed
Tubes are easily detached

Foldaway, detachable armrest

Folding and extending legrest safety feature ensures that the legrest retracts if contact is made with any object

Ultra-slim backrest improves Operator's working comfort

Integrated foot control stalks for chair movements including two programmable presets, Last-Position memory and Auto-Return

The telescopic base is a superior, elegant design solution for easy hygiene maintenance – smooth, white surfaces, with integrated foot controls. Supremely comfortable chair movements, smooth, near-silent and gentle start/stop.

Cleo II versatility for working comfort

From consultation through treatment, Cleo II provides supreme access and working comfort for the Operator and Assistant.

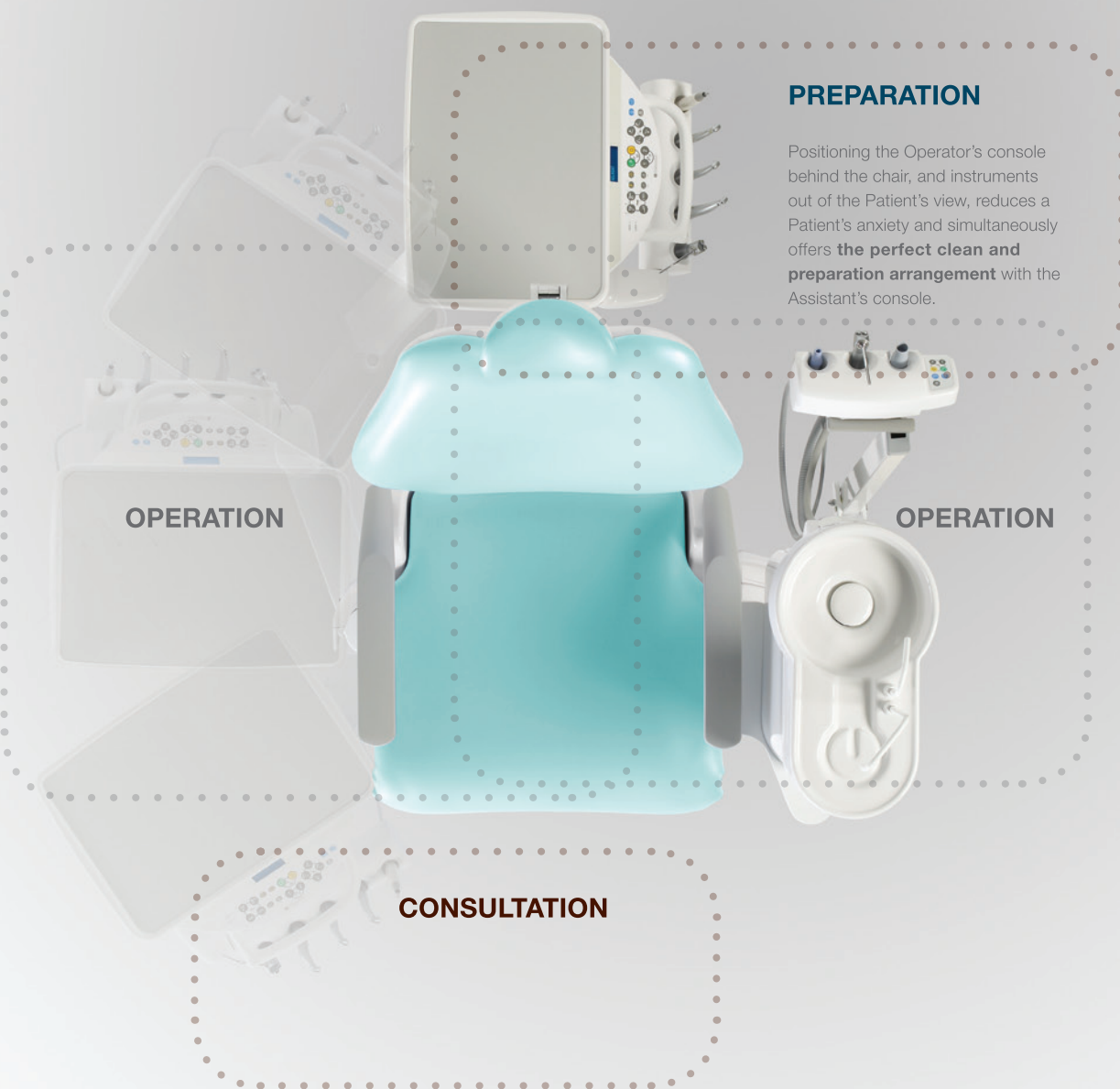


Folding legrest and detachable, foldaway armrest for perfect Patient entry and exit

Completing clean-prep during consultation improves efficiency



Maximised workflow and a greater variety of operation are the key achievements of the Cleo II treatment centre. An inclined Cleo II chair is a very gentle welcome to any Patient entering the surgery and enables the most pleasant consultation position possible.



complete, hygienic surgery system

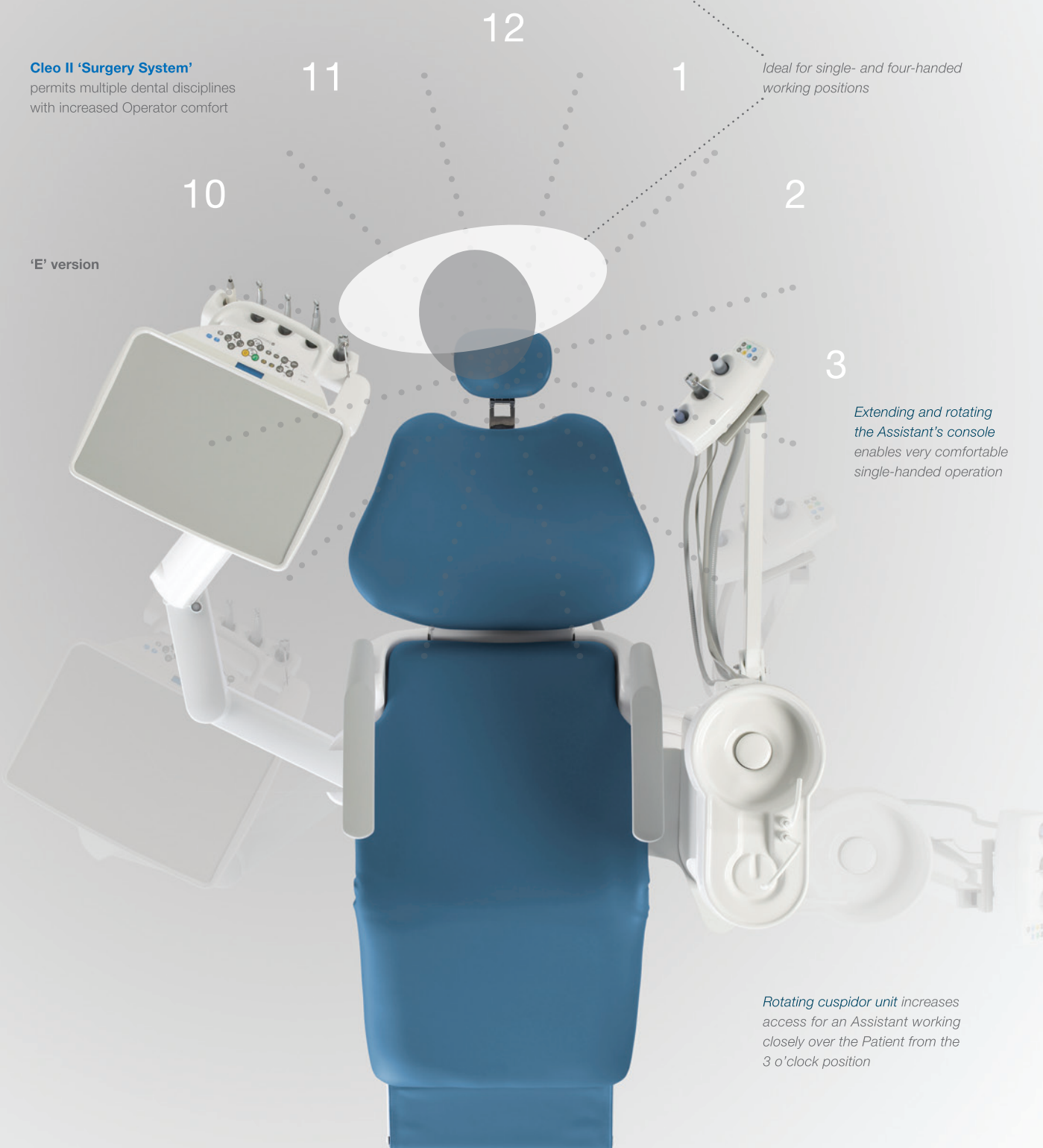


Operator can work unobstructed from the front, side or behind the Patient.

Cleo II 'Surgery System'

permits multiple dental disciplines with increased Operator comfort

'E' version



Ideal for single- and four-handed working positions

Extending and rotating the Assistant's console enables very comfortable single-handed operation

Rotating cuspidor unit increases access for an Assistant working closely over the Patient from the 3 o'clock position

Cleo II Patient-friendly, synchronised chair

Unique folding-extending chair occupies an unusually small footprint and provides unrivalled comfort, natural support and enhanced access for both Operator and Patient.

Cleo II chair

Seamless upholstery (Luxury option available)

Folding and extending legrest

Cleo II chair key features ~

- Folding and extending legrest with safety feature
- Twin-articulating headrest
- Ultra-slim backrest
- Lumbar support
- Foldaway, detachable armrests
- Integrated foot control stalks
- Foot control
- Available with Luxury or Seamless upholstery
- Chair preset positions

Twin-articulating headrest



A folded legrest and foldaway armrest ensures zero obstruction to Patient entry and exit

Twin-axis backrest with lumbar support

Foldaway, detachable armrest

Wheelchair access is made possible by the unique combination of an inclined chair and opened armrest

Folding and extending legrest safety feature ensures that the legrest retracts if contact is made with any object

Upgrading and accessorising

Belmont's range of factory built-in options can be used to increase the functionality of a treatment centre and the services that your Practice offers to the Patients. Visit belmontdental.co.uk or see our price list for further details.

Increased range of synchronised, smooth and quiet chair movements



Control all chair movements by hand or foot

'A' and 'E' version options to suit your preferences



'A' version control panel includes instrument, chair, spittoon and light controls
 'E' version controls additionally include preset micro-motor to run torque control with Auto-Reverse, and 2 fibre-optic Turbine hoses.



Height-adjustable, rotating Assistant's console with chair, spittoon and light controls. Cuspidor features an easy-clean porcelain spittoon with cup-filler and bowl-flush.



Mobile Cart and Module flexible options, 'A' and 'E' versions

Unit-mounted light options¹



700 Series



800 Series



900 LED Series with Patient mirror option

Control all chair movements by hand or foot: by hand from both the Operator's and Assistant's console; by foot using the stalks built into the chair base. Spittoon functions and ON/OFF light control are also activated from both the Operator's and Assistant's console.



Operator's foot control for instruments

¹Other mounting options are available, see 'Operating Lights' on pages 58-63 for additional information